

the
WINTERING
retreat



THURSDAY 18TH JUNE - SUNDAY 21ST JUNE
KULA | MURIWAI



Kula, Muriwai



OCEAN VIEWS | ROLLING HILLSIDES | RURAL TRANQUILITY



Accommodation

5 STAR LUXURY



Contrast Therapy

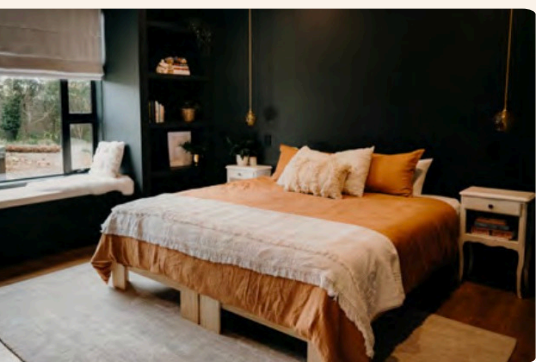
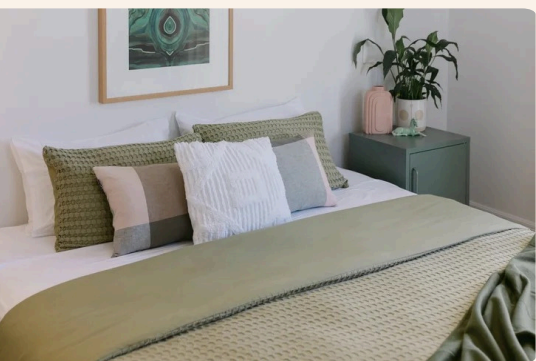
FINNISH SAUNA | STEAM SAUNA | ICE BATH | SPA



Rooms to Rest



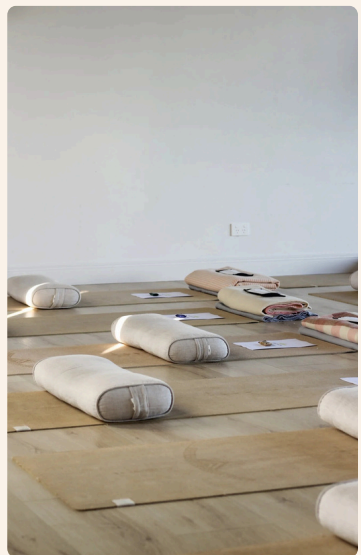
A SELECTION OF HIDEAWAY SPACES



Yoga Shala



SPACIOUS | SERENE | VIEWS FOR DAYS



Wintering



[the act of passing Winter in a specific place, often involving rest and retreat to recover from difficult times. It is a fallow period used to recharge and reflect, mirroring how plants and animals navigate this season]

It is with a full heart and a feeling of deep privilege we bring you our Wintering Retreat. With reverence for rest we invite you to join us for a 3 night retreat at the incredible Kula, in Muriwai. This location is breathtaking; envision views of the ocean, serene rolling green hillsides, incredible architecture, five star accommodation, functional shared spaces, sauna and ice bath, a stunning high stud Yoga Shala and nourishing catering.

What makes this retreat extra special?
June marks the tenth birthday of REVA and we wanted to celebrate with our clients, friends and community alongside three of our most experienced facilitators. This retreat is intended to honour the inner Winter at a time where we would traditionally seek warmer locations. We embrace this season in all its glory and embrace each other at a time where slowing down and taking pause feels to be a great luxury.



Pricing



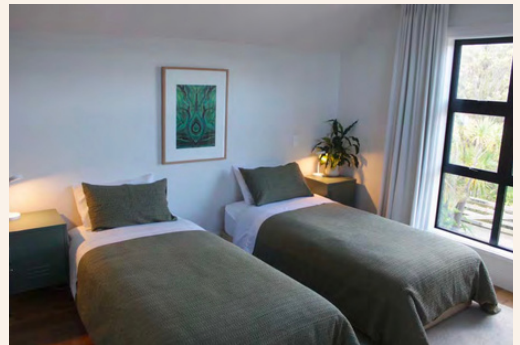
Retreat Pricing varies based upon tier of Accommodation.
Select your room based on your budget, whether you are joining with a friend(s) or lover and your appetite for indulgence.

Bunk Rooms

\$1599 pp

Sleeps 4

King Single Bespoke Adult Bunks



Twin Share

\$1799pp

Sleeps 2

Two King Single Beds

Or One Californian King Bed

Pricing



Fig Tree and Hauora | Private Cabins

\$1899 pp

Sleeps 1 to 2

One King Bed

Short Walk to Bathroom



Pricing



Te Henga | Master Suite

\$2299 pp

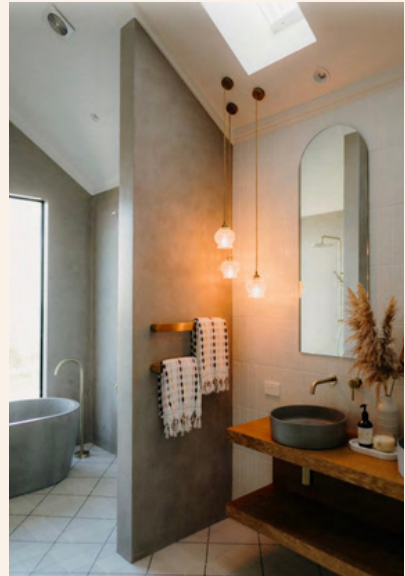
Sleeps 1 to 2

One King Bed

Private Infra Red Sauna

Private Ensuite with Bath tub

Ocean Views



Facilitators



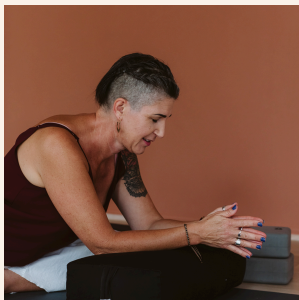
Nadine Rogers

Somatic Breathwork Guide
Trauma Informed Yin Yoga Teacher
Cacao Queen



Zara Brouwers

Vinyasa Flow Guide
Connector of People
Space Holder



Natasha Mason

Gifted DJ
Embodied Somatic Dance Facilitator
Sexological Bodyworker

Retreat Itinerary

Over the course of the three day retreat we will enjoy Yoga, Breathwork, Somatic Dance, Cacao Ceremony, Tarot and guided journaling.

We will have space throughout the weekend for attendees to enjoy massage therapy, reiki and Sauna/ice baths on site, to take naps or connect with others in the sprawling living spaces.

Retreat schedule includes two daily practices, 8am Flow with Live DJ and a gentle Yin late afternoon. Note these are optional to attend.

Travel to Muriwai

Retreat attendees may choose to fly to Auckland and take the short commute to Muriwai or make a road trip with other students.

Retreat Arrival Thursday 18th June from 3pm (Dinner served at 7pm)

Retreat Departure Sunday 21st of June before 5pm

Terms and Conditions

We are limited to 15 attendees due to Kula's capacity. Be sure to reserve your space to avoid disappointment.

A 15% non-refundable deposit is required to secure your room upon booking. Balance to be paid 2 weeks prior to retreat.

Cancellations within 2 weeks of retreat commencement are not eligible for a refund. Payment plans are available, for information contact hello@revayoga.co.nz

Inclusions

Prices are fully inclusive of all catering (meals and snacks), three nights accommodation, sauna, ice bath, spa access, all practices and ceremonies and goodie bags upon arrival. Please advise us of any dietary requirements.

Reiki healings and Massage Therapy are available at Kula Muriwai for an additional charge for participants, please arrange this with us upon booking so bookings can be made for you.